



Introducing the ALL-NEW

JTRAK

TENT TRAILER



DESIGNED FOR AUSTRALIA

JTRAK has been designed with avid campers in mind. The quick and easy set-up is the key feature of Jayco's first tent trailer, along with an inflatable annex option, exclusive to Jayco.

JTRAK is the first Jayco product to showcase the new generation of Jayco chassis with JTech 2.0 suspension. JTech 2.0 is designed specifically for off-road adventures which means you can venture further with confidence. Choose from four JTRAK models to suit you, your family and your mates.

QUICK AND EASY SET-UP

**WIND DOWN THE STABILISING
LEGS AND UNCLIP THE
TOUGH-LOCK LATCHES**

1



**HOOK THE WINCH* AND WIND
THE HARD LID WHILE THE TENT
SECTION UNFOLDS ITSELF**

2



**PUSH THE BED END POLES INTO
PLACE ON THE INSIDE OF THE
JTRAK AND START YOUR
ADVENTURE**

3



*Winch not available on touring model

200,000+ UNITS BOUGHT, SOLD & SUPPORTED
BY AUSTRALIA'S LARGEST MANUFACTURER



No. 1-selling RV brand
in Australia



Designed and made
in Australia



2-year manufacturer's warranty*
5-year structural warranty*



Over 100 service agents
nationwide



43-years' experience
in RV manufacturing

JAYCO.COM.AU | 1300 JAYCO RV

Jayco Corporation owns the copyright in this brochure. Unauthorised use, reproduction or adaptation is forbidden and will be prosecuted. Due to ongoing improvement, the specifications in this brochure are subject to change without notice. ©JAYCO 2018 PO Box 636 Dandenong VIC Australia 3175.

*Terms & conditions available at jayco.com.au

THE DIFFERENCE IS IN THE DETAILS



Tent section - 10 oz double-stitched, heavy-duty Australian canvas



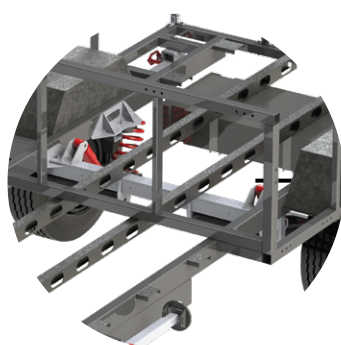
Dinette seating with durable designer fabric



Large storage box with heavy-duty seals and slide-out trays



Front and rear winch



Hot-dip-galvanised chassis



OBX model shown. Features shown may be optional extras and are model dependent.



Quick & easy
set up



EXCLUSIVE TO JAYCO:
Inflatable annex



The new generation of the legendary, tried-and-tested, heavy-duty, hot-dip-galvanised Jayco chassis is equipped with the new JTech 2.0 suspension. Designed for off-road adventures, it allows you to venture further with confidence. The lightweight JTech 2.0 trailing-arm suspension is compact in size, durable, and reacts better to road undulations.



Huge front bed
1940 mm x 1600 mm

Euro-style
furniture with
aluminium
corners & seat
framing



Smooth skin gunmetal
grey clad walls



Water 12 v pump to sink



JTECH 2.0
Independent
Coil Suspension



Over 100 service agents
nationwide



2-Year manufacturer's +
5-Year structural warranty*

AUSTRALIAN MADE



Like all Jayco products, the JTRAK tent trailer proudly holds the Australian Made logo, certifying it as genuine Aussie-made, helping sustain Australian jobs and ensuring the best quality.



Purpose built for the rugged Australian conditions, the all-new JTRAK tent trailer is manufactured in Jayco's world-class manufacturing plant in Dandenong, Victoria.

Every aspect of the JTRAK tent trailer is engineered and validated by the Victoria-based Jayco Research and Design team. All JTRAK parts are processed, quality-approved and assembled into finished product at the Jayco manufacturing plant.



The chassis, suspension, internal furniture and upholstery are produced in Jayco's manufacturing plant. To support Australian manufacturers, JTRAK electricals, decals and the tent are sourced locally.

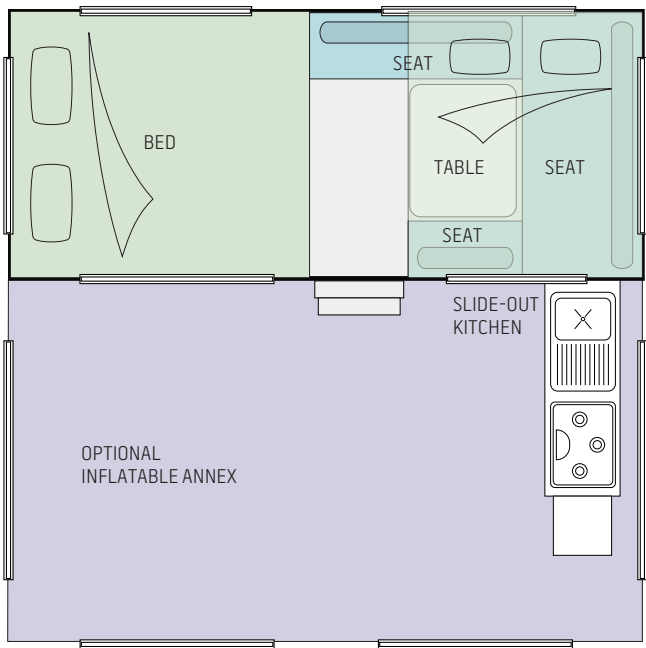
As part of the Jayco Testing Program, JTRAK has undergone weeks of testing on the same ground where major automotive and truck manufacturers, and suppliers to the Australian Defence Force test their vehicles.



JTRAK FEATURES

TR TRX OB OBX

Appliances				
Cooktop - 3-burner to external kitchen (with flame failure device)	●	●	●	●
Fridge compartment to main storage box with slide	●	●	●	●
Comfort				
Comfortable seating in durable designer fabric & antibacterial seat foam	●	●	●	●
Mattress - innerspring	○	○	○	○
Construction				
Chassis - streamline hot dipped galvanised	●	●	●	●
Furniture - euro style with aluminium corners & seat framing	●	●	●	●
Suspension - axle & leaf springs	●	●	—	—
Suspension - JTECH 2.0 Independent Coil	—	—	●	●
Walls - smooth skin gunmetal grey clad	●	●	●	●
Exterior General				
Anderson plug to A-frame	●	●	●	●
Boot - front boot compartment	—	—	●	●
Coupling - 50 mm ball	●	●	—	—
Coupling - shockproof swivel	—	—	●	●
Gas bayonet x 2	●	●	●	●
Gas bottle 1 x 9 kg (2 x 9 kg to Outback)	●	●	●	●
Inflatable annex with built-in LED lights	○	○	○	○
Power - 3 x 12v sockets and 2 x USB ports	●	●	●	●
Roof rack	—	—	—	●
Sink with Cold water spout	●	●	●	●
Storage box - Large with heavy-duty seals and slide-out trays	—	—	●	●
Storage box - Small with heavy-duty seals and slide-out trays	●	●	—	—
Tap - 12v pump to sink	●	●	●	●



TR TRX OB OBX

Tent section - 10 oz double-stitched, heavy-duty Australian canvas	●	●	●	●
Water tank - 1 x 65L under floor with guard	—	—	●	●
Water tank - additional 65L with guard	—	—	—	●
Wheels - 14" 185/70R14 with single spare	●	●	—	—
Wheels - 15" 235/70R15 with single spare	—	—	●	—
Wheels - 16" 245/70R15 with dual spares	—	—	—	●
Winch - Front	—	●	●	●
Winch - Rear	—	●	●	●
Interior General				
Battery - 12 Volt - 100Ah AGM	—	—	●	●
Battery - 12 Volt - 2 x 100Ah AGM	—	—	—	●
Bed converter to seating area	●	●	●	●
Control panel - switches	●	●	●	●
Control panel - water and battery gauge	—	●	●	●
Tap - Mains pressure to sink	●	—	—	—
Safety				
Smoke Detector - Portable	●	●	●	●
Water Filler - lockable	●	●	●	●
Wheels - nitrogen filled	●	●	●	●

- Standard
- Optional
- Not available

TR TRX OB OBX

Body (L) (mm)	2280	2880	3740	3740
Body (W) (mm)	1900	1900	1900	2015
Front bed (W) (mm)	1600	1600	1600	1600
Front bed (L) (mm)	1940	1940	1940	1940
Rear bed (W) (mm)	1400	1400	1400	1400
Rear bed (L) (mm)	1700	1700	1700	1700
Interior open (L)	4800	4800	5100	5250
Interior (H) (mm)	2300	2300	2300	2300

SINGLE AXLE	TR	TRX	OB	OBX
Tare weight (kg)	950	1015	1200	1400
Tow ball (kg)	105	130	170	170
Travel (L) (mm)	4800	4800	5100	5250
Travel (H) (mm)	1450	1450	1500	1500

